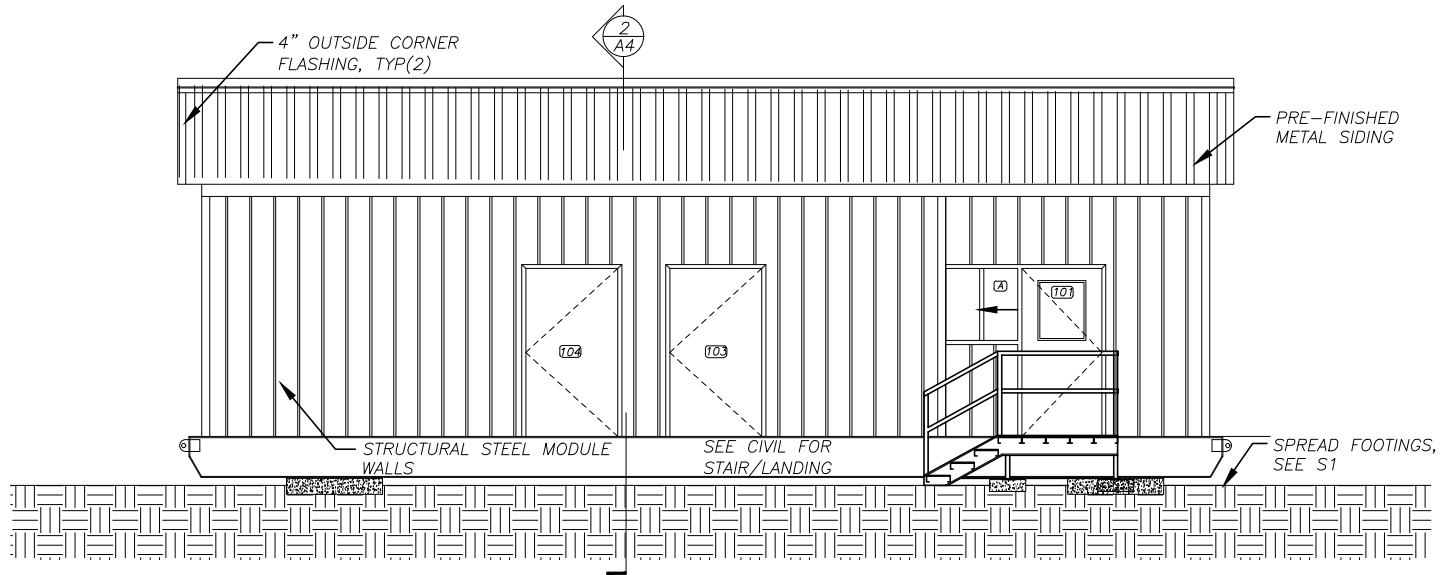
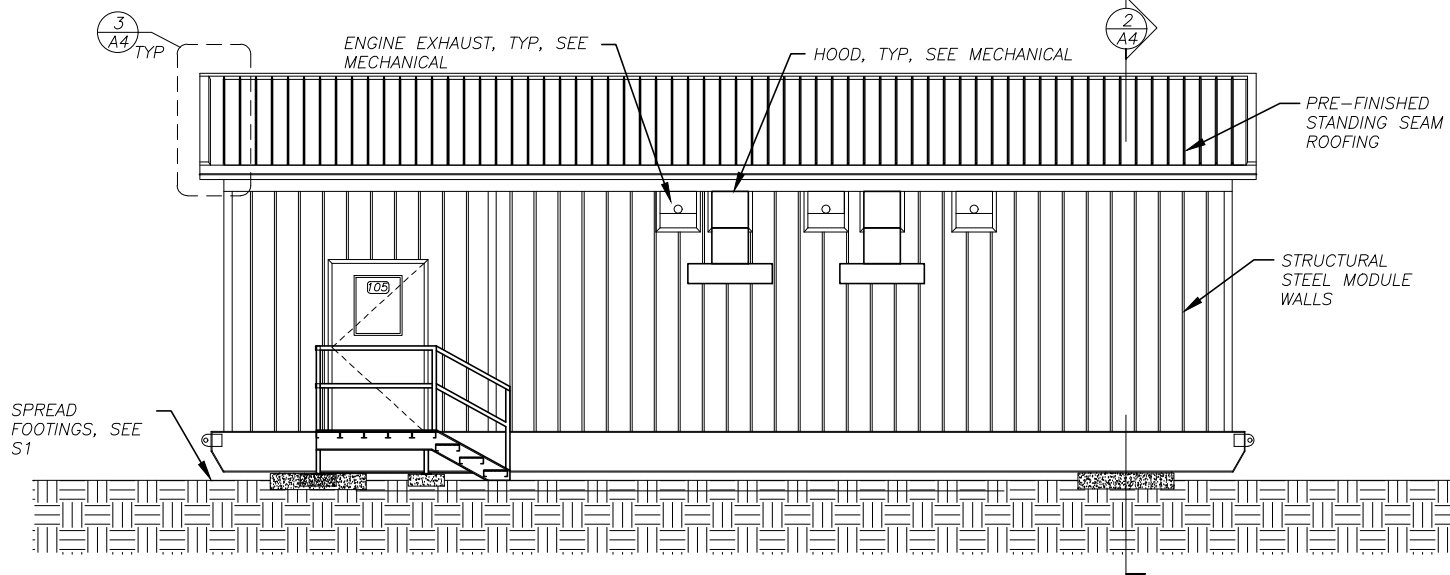


H:\Jobs\14-025 Perryville RPSU (AEA Term)\02 - CAD\Drawing\14025\_00\_MODULE ARCH, 1-1, 04-26-16 at 08:13 by VJB  
LAYOUT: A2

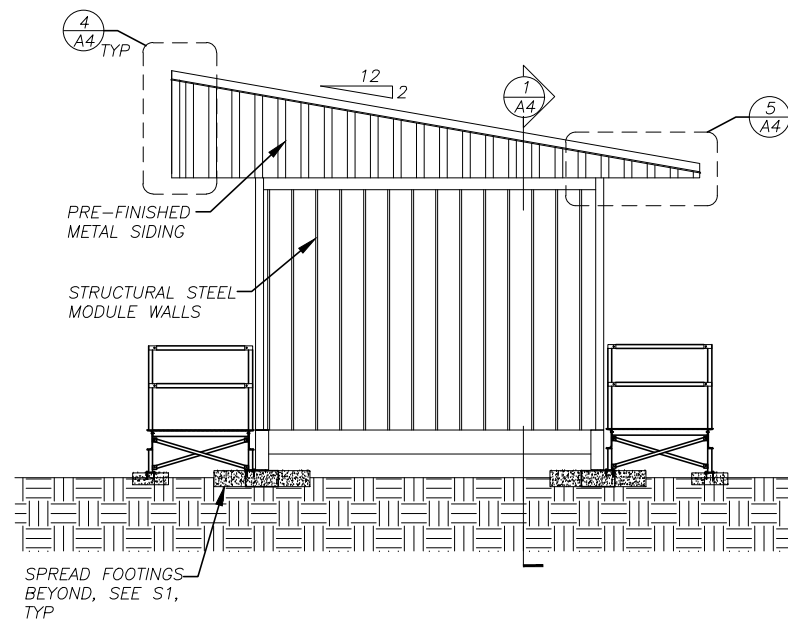


1  
A2 FRONT EXTERIOR ELEVATION  
1/4"=1'-0"



3  
A2 BACK EXTERIOR ELEVATION  
1/4"=1'-0"

**NOTE:  
GENERATOR MODULE AND STAIRS ARE  
OWNER-FURNISHED. CONTRACTOR SHALL MOBILIZE TO  
THE SITE, INSTALL ON NEW FOUNDATIONS, INSTALL  
STAIRS, AND FURNISH AND INSTALL ROOF.**

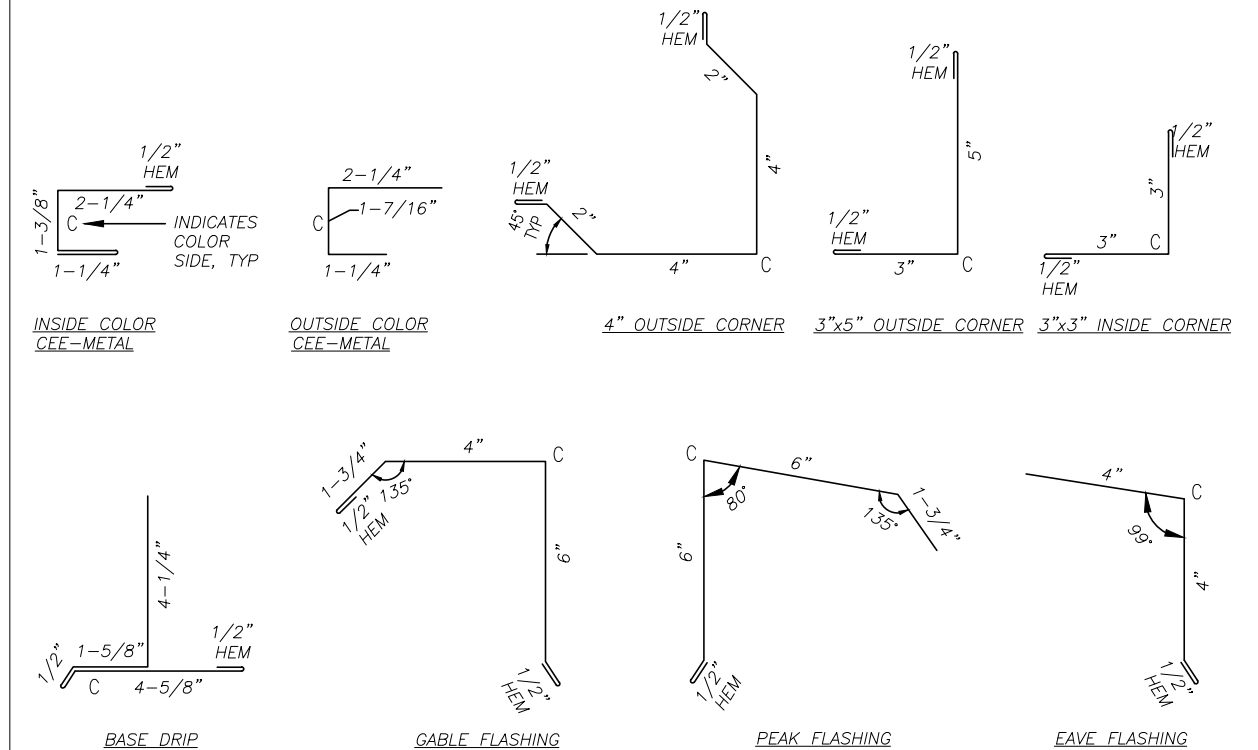


2  
A2 END EXTERIOR ELEVATION  
1/4"=1'-0"

#### ROOFING SYSTEM NOTES:

- 1) FIELD INSTALL TRUSSES TO MODULE STRUCTURE, SEE STRUCTURAL. FIELD ICE & WATER SHIELD AND METAL ROOFING/SIDING AS INDICATED. SEAL AND FLASH ALL SEAMS TO FORM A CONTINUOUS WEATHERPROOF SEAL.
- 2) ALL ROOFING, SIDING, TRIM, AND FLASHING SHALL BE MIN 24 GAUGE GALVANIZED STEEL WITH KYNAR FINISH, COLOR JADE GREEN. ALL FASTENERS SHALL BE CORROSION RESISTANT STAINLESS STEEL SCREWS AND ALUMINUM RIVETS.
- 3) ROOFING SHALL BE STANDING SEAM TYPE, 24 GAUGE, 16" NET COVERAGE, 1-5/8" HIGH RIBS AT 8" O.C. AEP SPAN KLIP-RIB OR EQUAL. FURNISH CLIPS AND FASTENERS AS REQUIRED TO MEET LOAD CONDITIONS INDICATED ON SHEET S1.
- 4) SIDING SHALL BE LOW PROFILE, 24 GAUGE, 36" NET COVERAGE, 1-1/4" HIGH MAJOR RIBS AND 1/4" HIGH MINOR RIBS AT 12" O.C. AEP SPAN SUPER-SPAN OR EQUAL. FURNISH FASTENERS AS REQUIRED TO MEET LOAD CONDITIONS INDICATED ON SHEET S1.

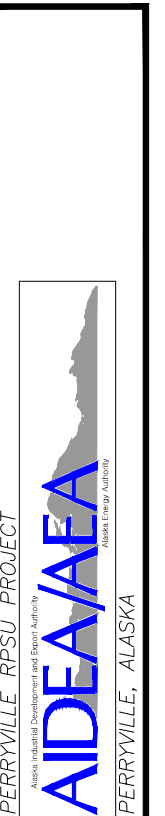
#### ROOFING SYSTEM TRIM & FLASHING:



REVISIONS	DATE	DESCRIPTION
1	7/12/16	APPENDUM 1
2		
3		
4		
5		



HATTENBURG DILLEY & LINNELL  
Engineering Consultants  
(907) 684-2100 - ANCHORAGE  
(907) 744-5230 - PALMER  
www.hdalaska.com  
P.O. 111405  
ANC, AK 99511  
Gray Stessel  
Engineering, Inc. (907) 349-0100



SHEET TITLE	
EXTERIOR ELEVATIONS ROOFING NOTES/TRIM	
SHEET	
A2	
DRAWN BY: WJP	CHECKED BY: BCG
DATE: 9/25/15	SCALE: AS SHOWN
JOB NUMBER:	